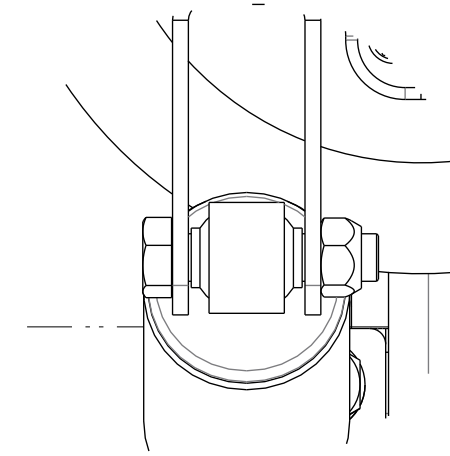
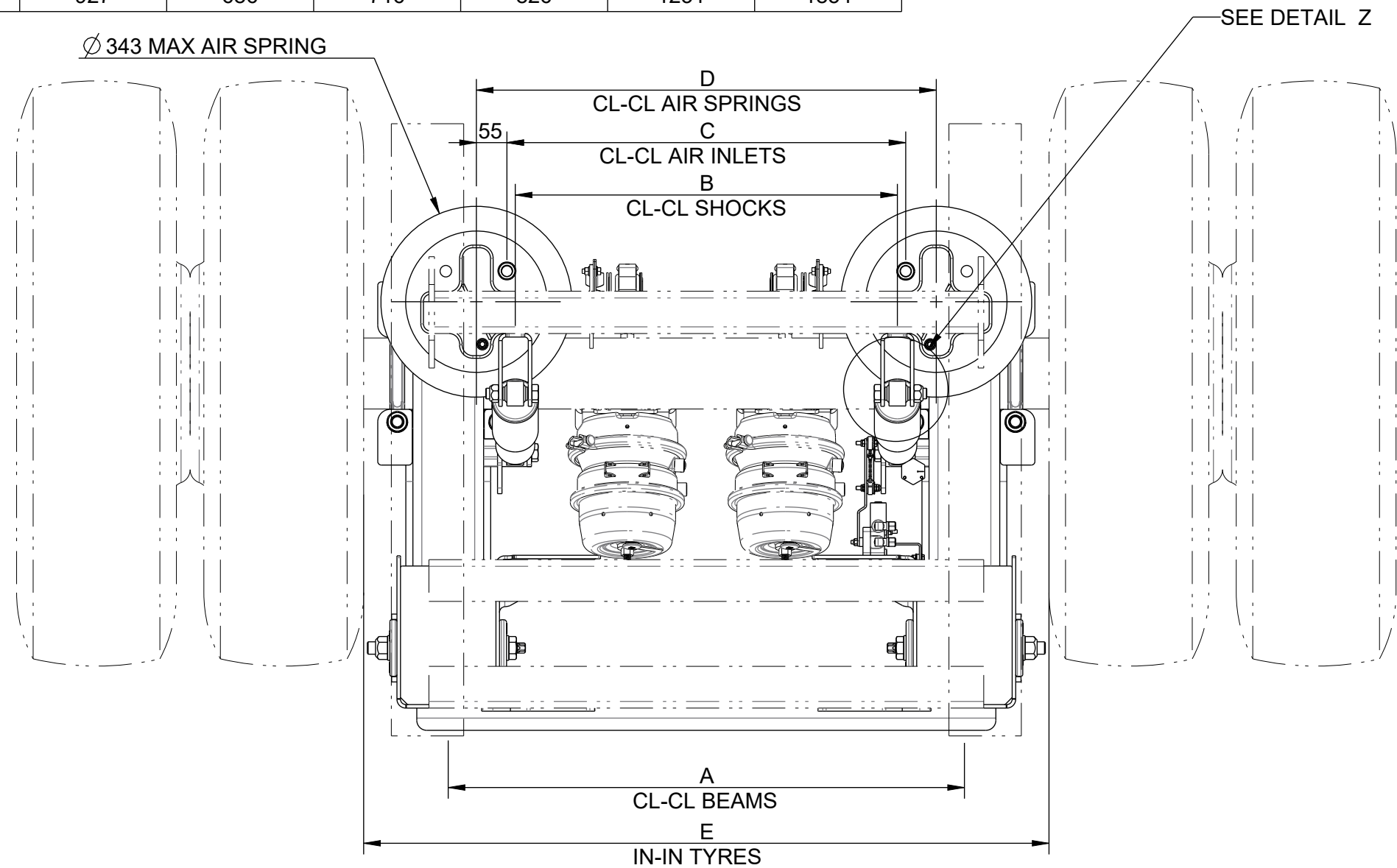


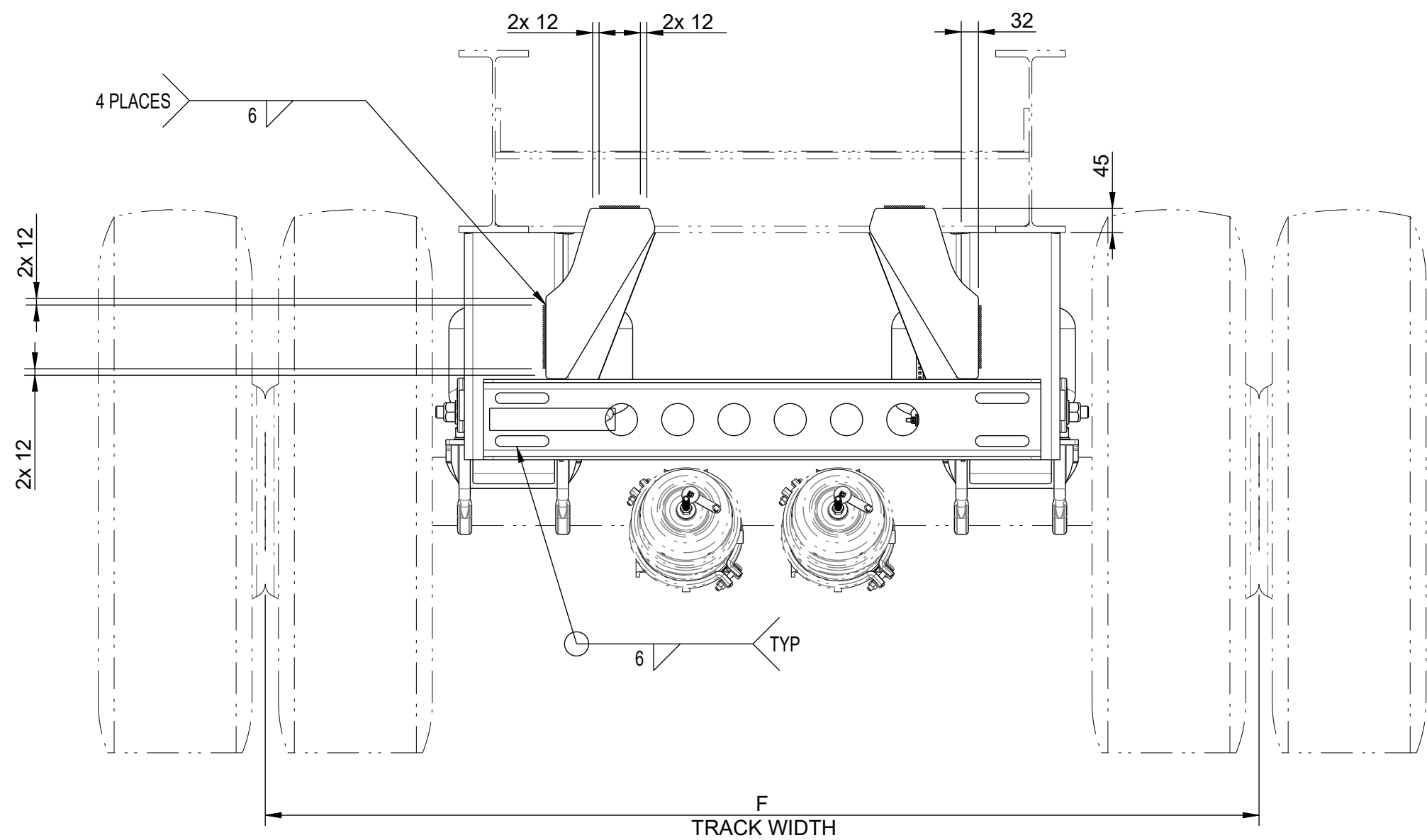
TRACK WIDTH	A	B	C	D	E	F
71.5" TRACK	889	648	678	788	1193	1816
73" TRACK	927	686	716	826	1231	1854

TORQUE SPECIFICATIONS		
DESCRIPTION	SIZE	TORQUE-Nm (lbft)
SHOCK BOLTS (UPPER)	3/4"-10	285-320 (210-235)
SHOCK BOLTS (LOWER)	3/4"-10	285-320 (210-235)
AIR SPRING NUTS (UPPER)	3/4"-16	110-135 (80-100)
AIR SPRING NUT (LOWER)	1/2"-13	55-65 (40-50)
U-BOLTS/SPACER KIT	-	645-710 (475-525)

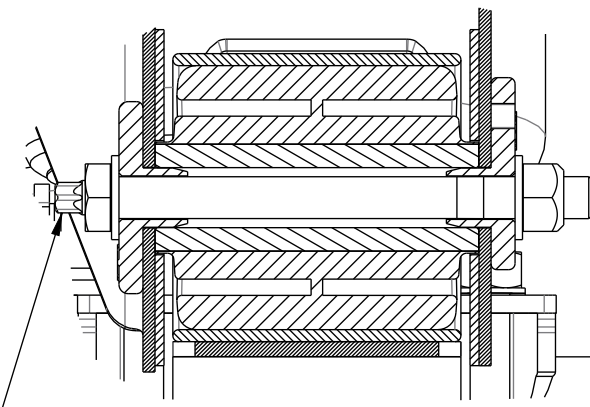
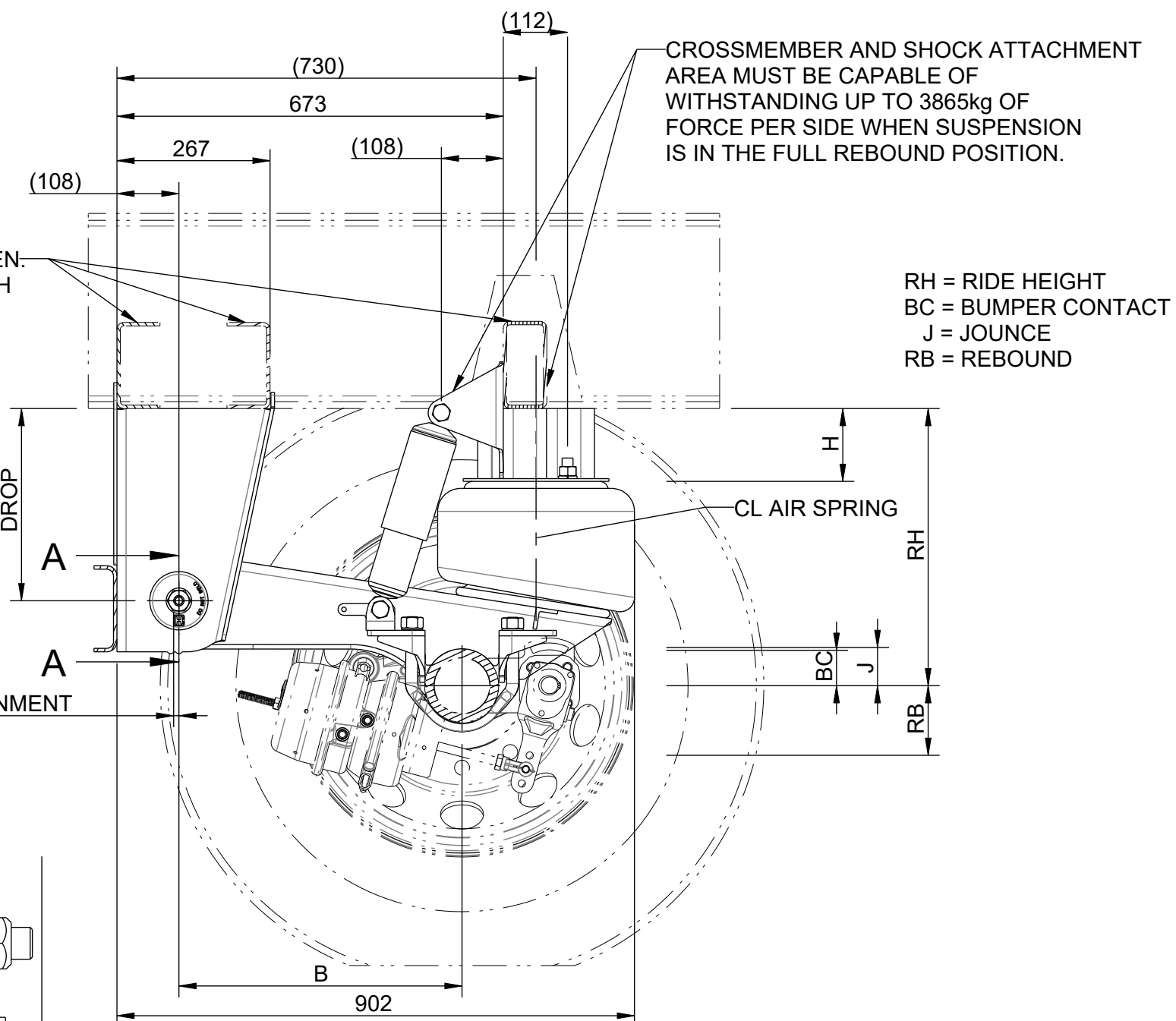
RH"	RH	BC	J	RB	DROP	B	H
14	356	58	63	128	203	492	5
15	381	65	70	127	203	483	25
16	406	61	66	123	254	492	51
17	432	66	71	127	254	483	76
19	483	62	67	121	335	493	127
14HC	356HC	49	54	116	254	505	5
15HC	381HC	58	63	117	254	499	25
15L	381L	83	88	103	203	483	5
17L	432L	87	92	97	254	483	51



- NOTES:
- LOAD CAPACITY: 10455kg (23,000lb) AT GROUND
  - WEIGHT LESS AXLE: REFER SHEET 3
  - BEFORE INSTALLING THE SUSPENSION, READ INSTALLATION MANUAL
  - RECOMMENDED BRAKE CAMSHAFT AND BRAKE CHAMBER LOCATIONS SHOWN MAY VARY SLIGHTLY BASED ON AXLE MANUFACTURERS SPECIFICATIONS.
  - IT IS THE RESPONSIBILITY OF THE INSTALLER TO ENSURE PROPER VEHICLE FRAME DESIGN IN AREA OF SUSPENSION ATTACHMENT
  - ALL WELDING PROCEDURES MUST BE DONE IN ACCORDANCE WITH FOR L-577
  - FRAME BRACKET LIP IS NOT TO BE TRIMMED, REMOVED, OR ALTERED IN ANY WAY. SUSPENSION INSTALLER MUST ENSURE THAT BOTH FRAME BRACKET LIPS CONTACT FRAME CROSSMEMBER, WITH NO MORE THAN 3mm GAP AT ANY POINT ALONG LIP EDGES. BOTH FRONT AND REAR OF LIP MUST BE WELDED TO CROSSMEMBER IN ACCORDANCE WITH HENDRICKSON TRAILER SUSPENSION SYSTEMS WELDING SPECIFICATION L-577
  - FOR TRAILER FRAME CONFIGURATIONS THAT DO NOT ALLOW ACCESS TO THE BLIND 3/8" HOLE IN THE TOP OF THE AIR SPRING, INSTALL THE 3/8" STUD IN THE AIR SPRING AS A LOCATOR.
  - DIMENSIONS MARKED \* ARE SPECIFICALLY APPLICABLE TO 1816mm (71.5") AXLE TRACK. ANY OTHER TRACK WILL REQUIRE ADJUSTMENT TO DIMENSIONS MARKED\*.



CROSSMEMBER LOCATIONS ARE GIVEN. STRUCTURE AND SIZE MAY VARY WITH TRAILER DESIGN AND ARE THE RESPONSIBILITY OF THE TRAILER MANUFACTURERS

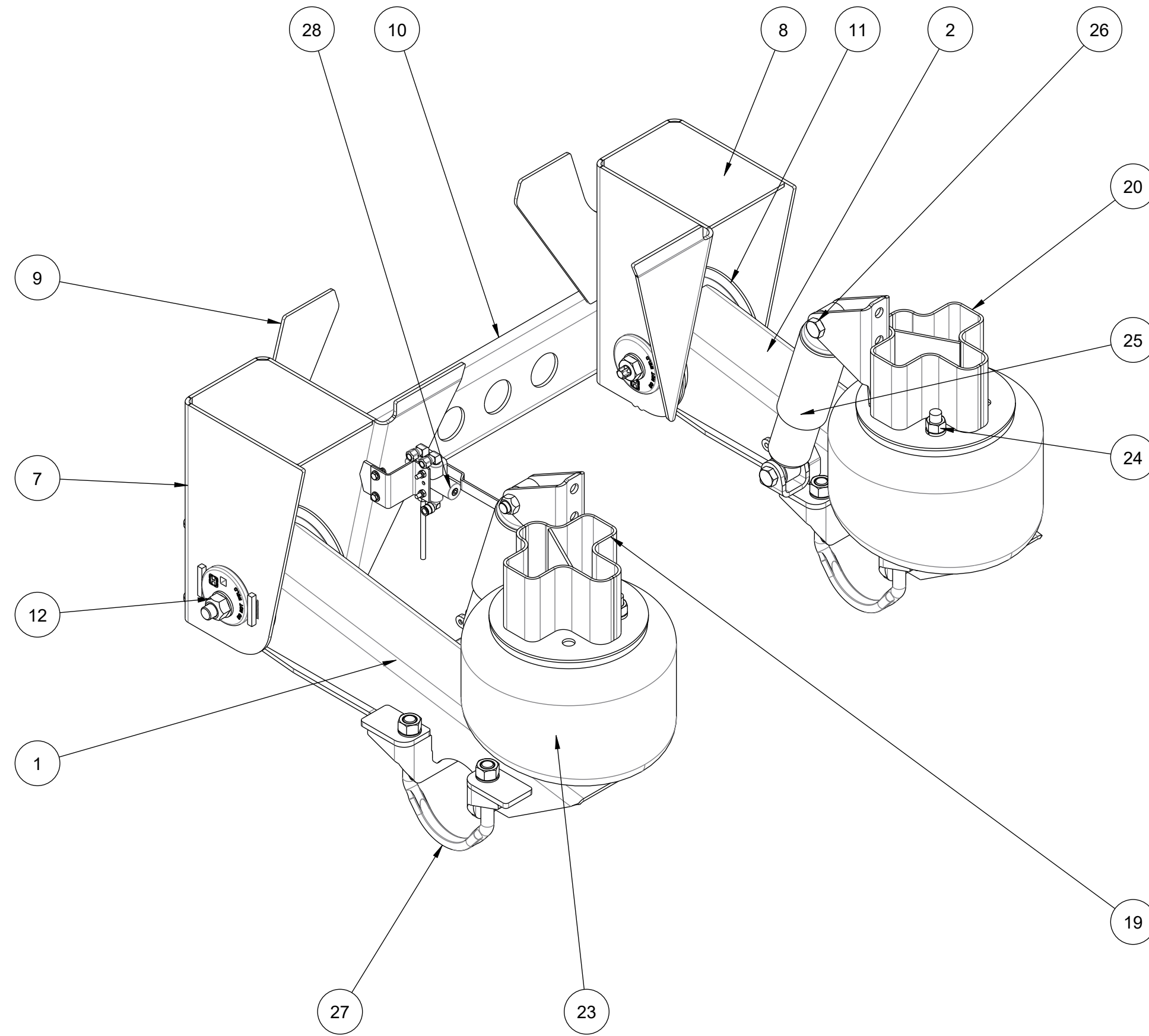


TIGHTEN UNTIL SHEAR HEAD SEPERATES

- CLEARANCE SPECIFICATIONS:
- 25mm MINIMUM REQUIRED BETWEEN TOP OF TYRE AND BOTTOM OF TRAILER STRUCTURE WHEN AXLE IS AT FULL JOUNCE.
  - 50mm MINIMUM REQUIRED BETWEEN INSIDE OF TYRE AND TRAILER STRUCTURE FOR LATERAL MOVEMENT.
  - 25mm MINIMUM CLEARANCE MUST BE MAINTAINED AROUND AIR SPRING WHEN IT IS AT MAXIMUM DIAMETER.

Rev	Revision Record	ECN N°	Drawn	Date Drawn	Appr.	Date Appr.
04	ANGLES REINSTATED ON PAGE 3	11496	A.P	16/01/19	S.M.C	21/01/19
03	REVISED AND REDRAWN	11145	S.G.	25/06/18	S.M.C.	24/07/18
02	SEE REV. NOTE 02	10549	G.F.	-	S.C.	20/02/14
01	Release	10183	S.E.	27/06/12	G.F.	03/09/12

Always check with Hendrickson Asia Pacific Pty Ltd that this drawing is to the latest revision level.	Material: N/A	Finish: N/A	Suspension: N/A	Project: N/A	Mass (kg): N/A	Sheet N°: 1 of 3
This Print remains the property of Hendrickson Asia Pacific Pty Ltd. All information contained thereon is confidential. It is loaned, subject to return on demand and on express condition that it is not to be copied or used directly or indirectly for any purpose other than the purpose for which it has been loaned to you.	 Asia Pacific Pty Ltd A Brier Company 32 - 44 Leiston Drive, Dandenong South, Vic. 3175 Australia, Copyright ©		Tolerance are: X: ± 1 X.X: ± 0.5 X.XX: ± 0.05 X.XXX: ± 0.005 Angular X.X: ± 0.25° Quality notes 98752-002	BOM: N/A Assembly: N/A File ref: 98873-138	Drawn: S.E. Chk'd: L.V. Appr.: G.F.	Date: 27/06/12 Date: 03/09/12 Date: 03/09/12
 INSTALN DWG HT230-WELD			Scale: 1:10 Sheet size: A2	98873-138		



19" STANDARD TRAVEL RIDE HEIGHT SHOWN

Item	Part N°	Description	STANDARD TRAVEL					HIGH CONTROL			LIFTABLE
			14"	15"	16"	17"	19"	14"	15"	15"	17"
1	D-27614-1	BEAM ASSEMBLY	1	1	1	1	1	1	1	1	1
2	D-27614-2	BEAM ASSEMBLY	1	1	1	1	1	1	1	1	1
3	D-21165-1	FRAME BRACKET ASSEMBLY	-	-	1	1	-	1	1	-	1
4	D-21165-2	FRAME BRACKET ASSEMBLY	-	-	1	1	-	1	1	-	1
5	D-21179-1	FRAME BRACKET ASSEMBLY	1	1	-	-	-	-	-	1	-
6	D-21179-2	FRAME BRACKET ASSEMBLY	1	1	-	-	-	-	-	1	-
7	D-21193-1	FRAME HANGER ASSEMBLY 13.188"DROP	-	-	-	-	1	-	-	-	-
8	D-21193-2	FRAME HANGER ASSEMBLY 13.188"DROP	-	-	-	-	1	-	-	-	-
9	B-27330	GUSSET, FRAME BRACKET	2	2	-	-	2	-	-	-	-
10	98870-016	CHANNEL BRACE HANGER SUPPORT	-	-	1	1	1	-	1	1	1
11	B-11613	BUSHING TUBE SPACER	4	4	4	4	4	4	4	4	4
12	A-31461	PIVOT BOLT/WASHER KIT QUIK ALIGN	2	2	2	2	2	2	2	2	2
13	C-20011-1	AIR SPRING SHOCK MOUNT	1	-	-	-	-	1	-	1	-
14	C-20011-2	AIR SPRING SHOCK MOUNT	1	-	-	-	-	1	-	1	-
15	C-20013-1	AIR SPRING SHOCK MOUNT	-	-	1	-	-	-	-	-	1
16	C-20013-2	AIR SPRING SHOCK MOUNT	-	-	1	-	-	-	-	-	1
17	C-20014-1	AIR SPRING SHOCK MOUNT	-	-	-	1	-	-	-	-	-
18	C-20014-2	AIR SPRING SHOCK MOUNT	-	-	-	1	-	-	-	-	-
19	C-20401-1	AIR SPRING SHOCK MOUNT	-	-	-	-	1	-	-	-	-
20	C-20401-2	AIR SPRING SHOCK MOUNT	-	-	-	-	1	-	-	-	-
21	C-21257-1	AIR SPRING SHOCK MOUNT	-	1	-	-	-	-	1	-	-
22	C-21257-2	AIR SPRING SHOCK MOUNT	-	1	-	-	-	-	1	-	-
23	C-21208	AIR SPRING	2	2	2	2	2	2	2	2	2
24	A-21251	AIR SPRING BOLT KIT	1	1	1	1	1	1	1	1	1
25	B-21699	SHOCK ABSORBER	2	2	2	2	2	2	2	2	2
26	A-27615	SHOCK BOLT KIT	1	1	1	1	1	1	1	1	1
27	A-21140	U-BOLT KIT HT SUSPENSIONS	1	1	1	1	1	1	1	1	1
28	98606-094	KIT,HCV,DUMP,HT230,300	1	1	1	1	1	1	1	1	1
* 29	B-21099	BUSHING TUBE SPACER, THICK	4	4	4	4	4	4	4	4	4

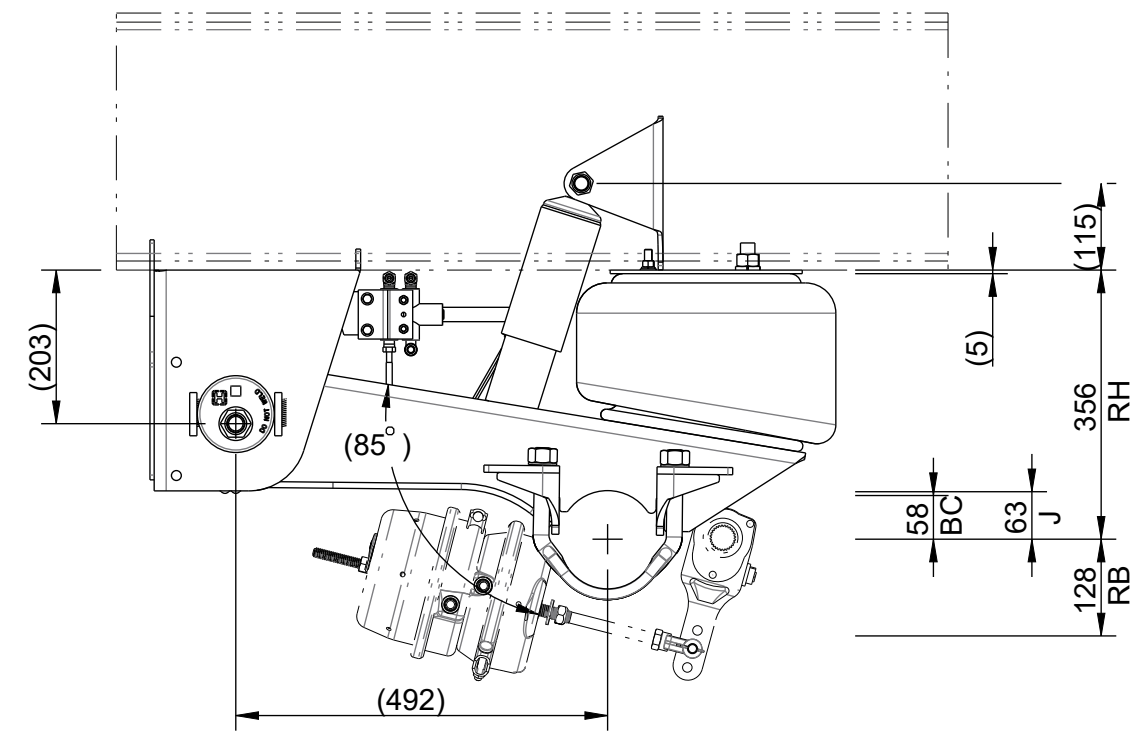
\* ALTERNATIVE PART TO B-11613

Rev	Revision Record	ECN N°	Drawn	Date Drawn	Appr.	Date Appr.
04	ANGLES REINSTATED ON PAGE 3	11496	A.P	16/01/19	S.M.C	21/01/19
03	REVISED AND REDRAWN	11145	S.G.	25/06/18	S.M.C.	24/07/18
02	SEE REV. NOTE 02	10549	G.F.	-	S.C.	20/02/14
01	Release	10183	S.E.	27/06/12	G.F.	03/09/12

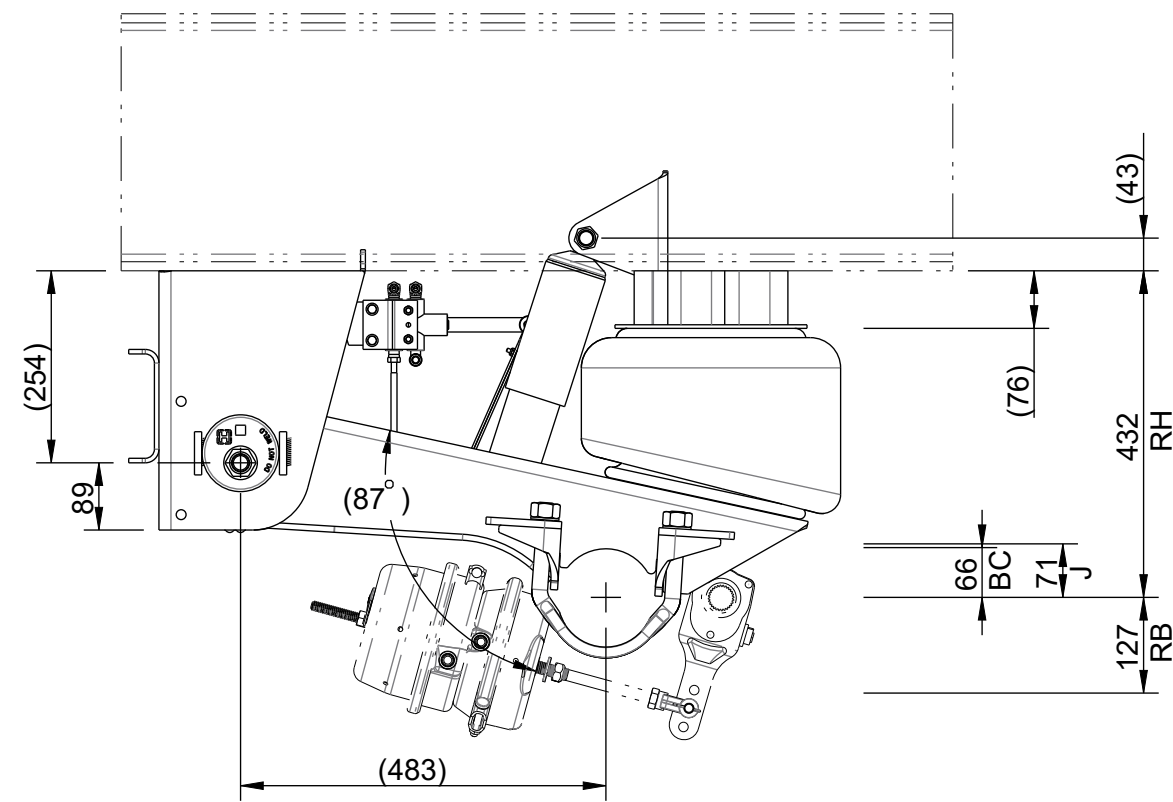
<p>Always check with Hendrickson Asia Pacific Pty Ltd that this drawing is to the latest revision level.</p> <p>This Print remains the property of Hendrickson Asia Pacific Pty Ltd. All information contained thereon is confidential. It is loaned, subject to return on demand and on express condition that it is not to be copied or used directly or indirectly for any purpose other than the purpose for which it has been loaned to you.</p>	<p>Material: N/A</p> <p>Finish: N/A</p> <p>Tolerance are:</p> <p>Decimal: X: ± 1, X.X: ± 0.5, X.XX: ± 0.05, X.XXX: ± 0.005</p> <p>Angular: X.X: ± 0.25*</p> <p>Quality notes: 98752-002</p>	<p>Suspension: N/A</p> <p>BOM: N/A</p> <p>Assembly: N/A</p> <p>File ref: 98873-138</p>	<p>Project: N/A</p> <p>Mass (kg): N/A</p> <p>Drawn: S.E.</p> <p>Chk'd: L.V.</p> <p>Appr.: G.F.</p> <p>Scale: 7:50</p> <p>Sheet size: A2</p>	<p>Sheet N°: Sht 2 of 3</p> <p>Date: 27/06/12</p> <p>Date: 03/09/12</p> <p>Date: 03/09/12</p>
	<p><b>HENDRICKSON</b></p> <p>Asia Pacific Pty Ltd</p> <p>32 - 44 Leicon Drive, Dandenong South, Vic. 3175 Australia, Copyright ©</p> <p>A Boler Company</p>		<p><b>INSTALN DWG HT230-WELD</b></p> <p>98873-138</p>	



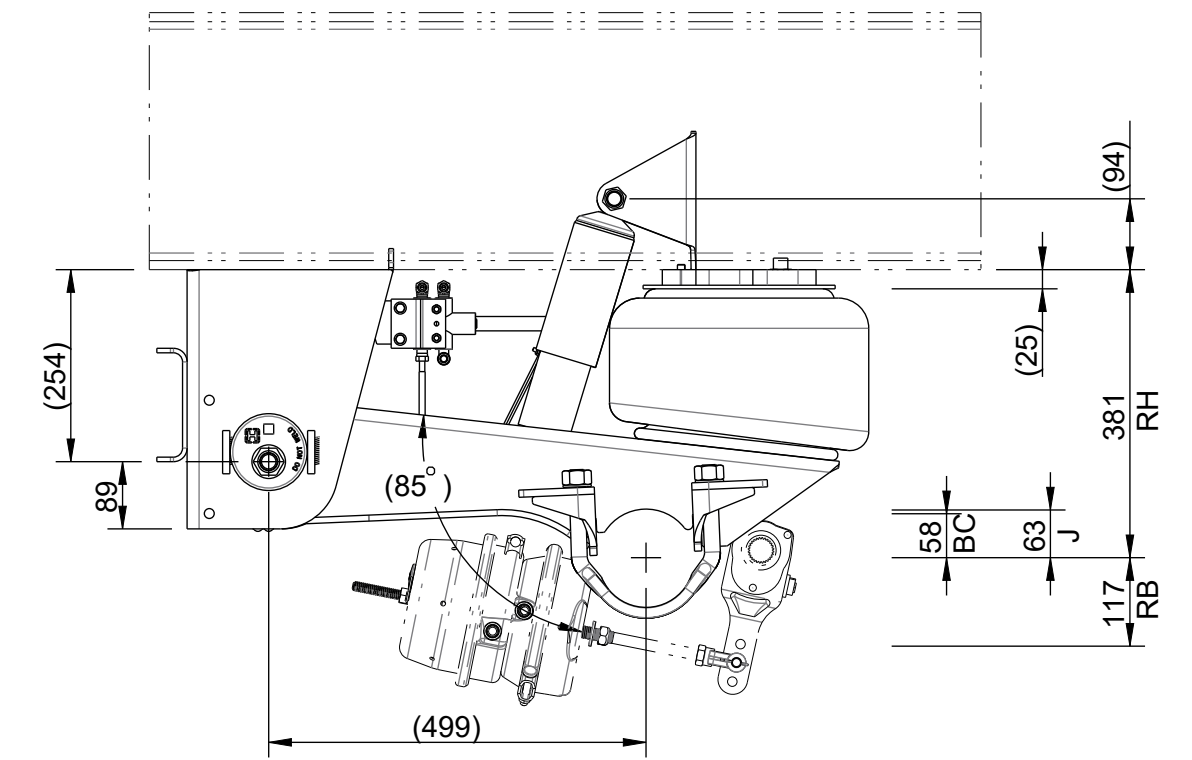
356 (14"RH) STANDARD TRAVEL



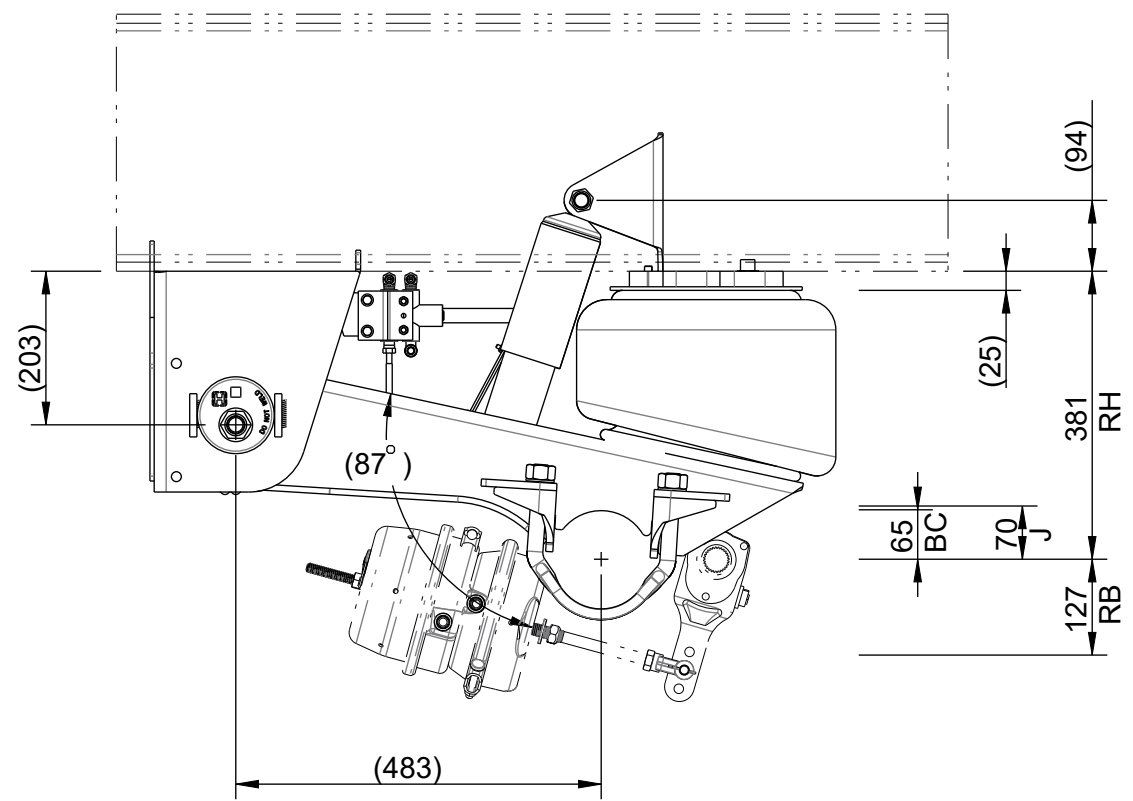
432 (17"RH) STANDARD TRAVEL



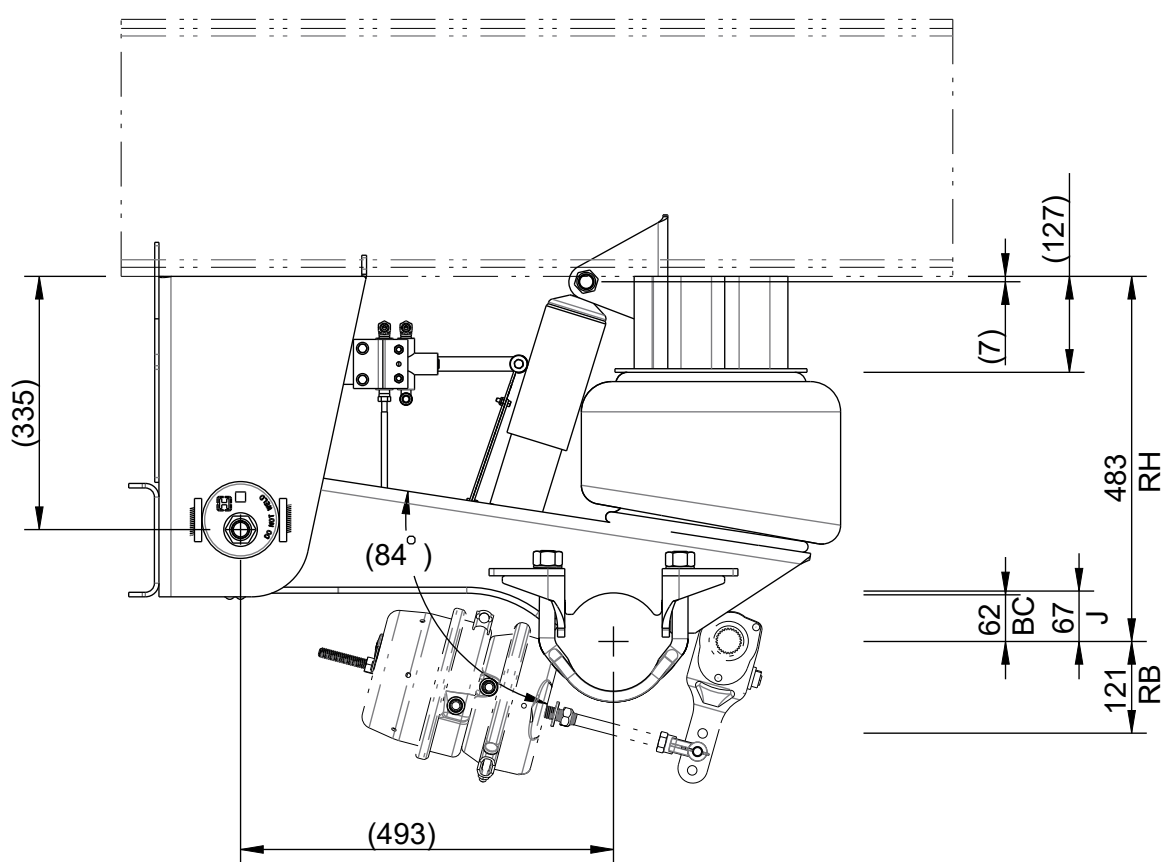
381 (15"RH) HIGH CONTROL



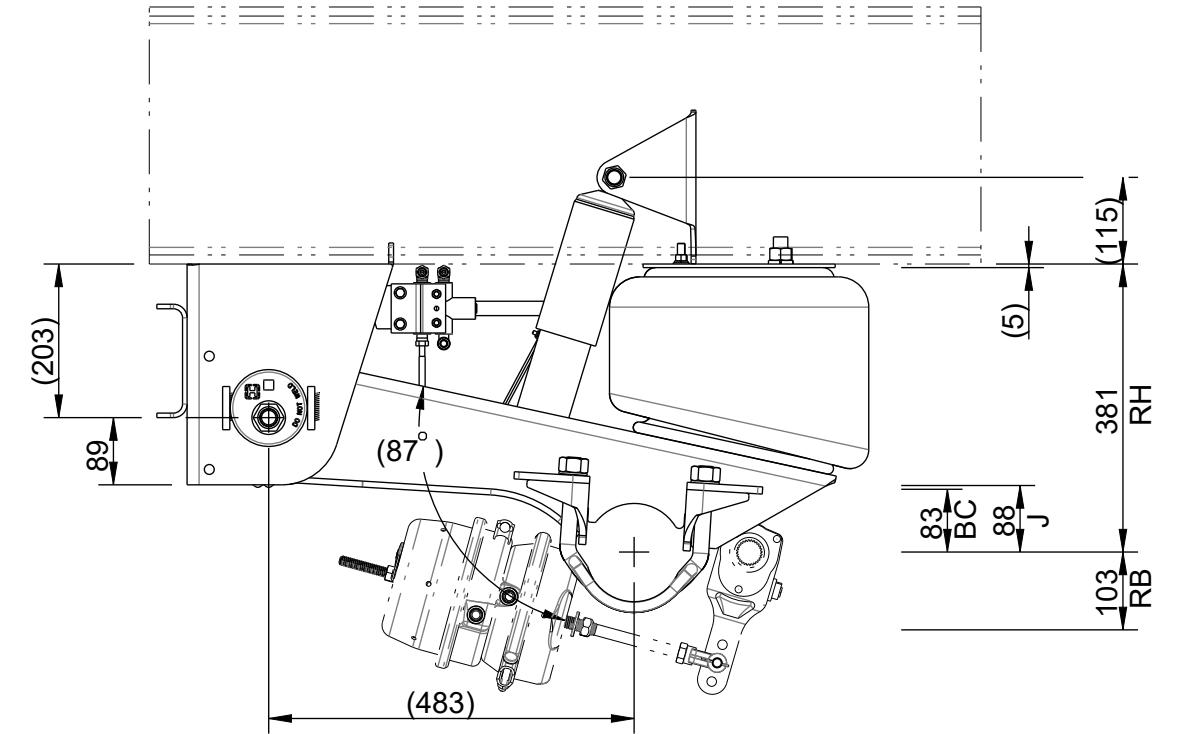
381 (15"RH) STANDARD TRAVEL



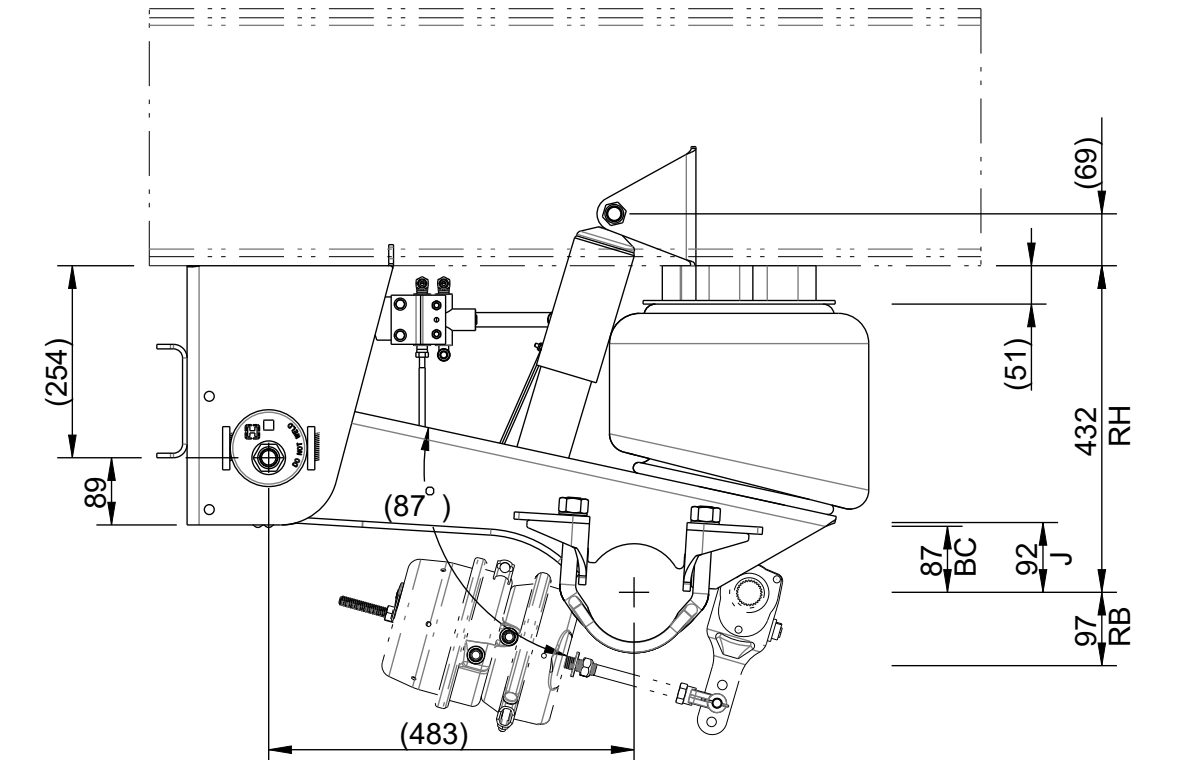
483 (19"RH) STANDARD TRAVEL



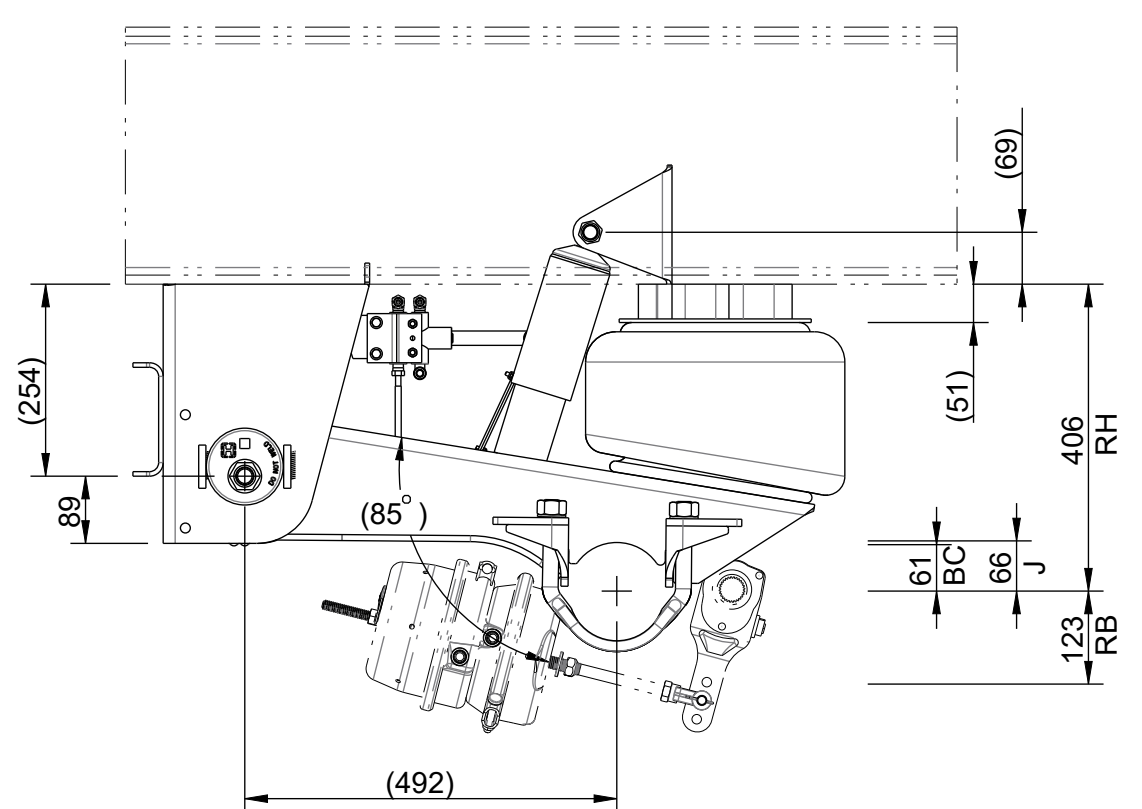
381 (15"RH) LIFTABLE



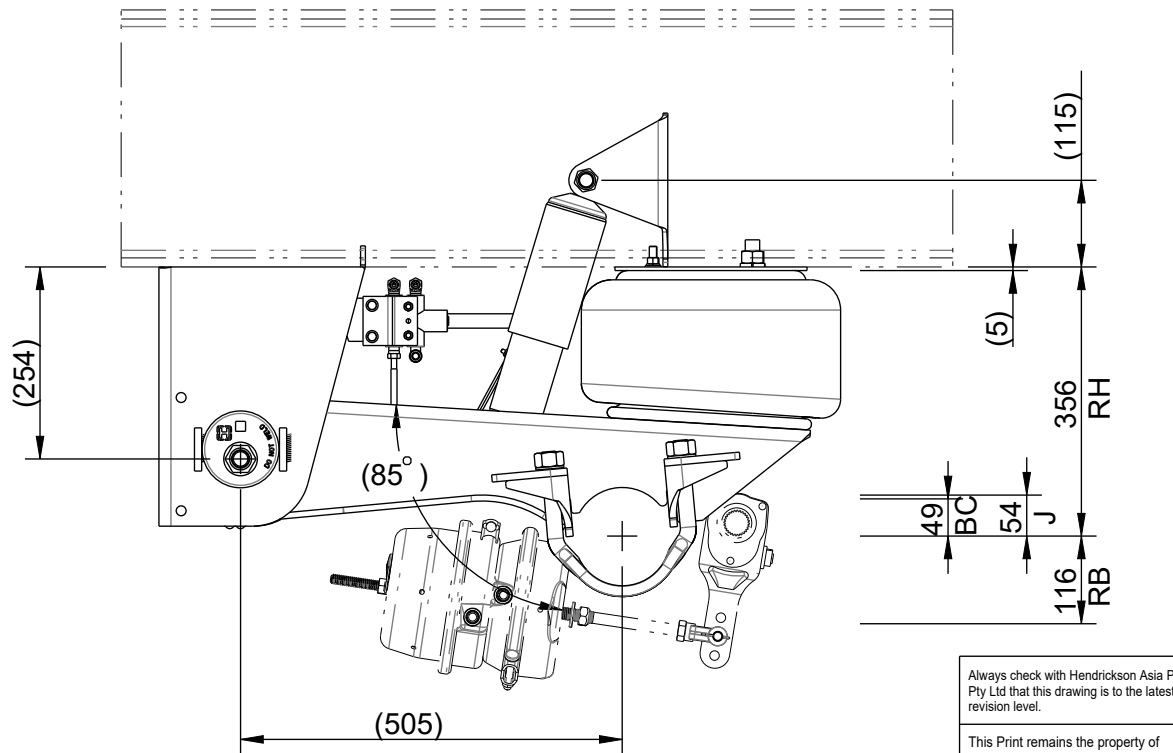
432 (17"RH) LIFTABLE



406 (16"RH) STANDARD TRAVEL



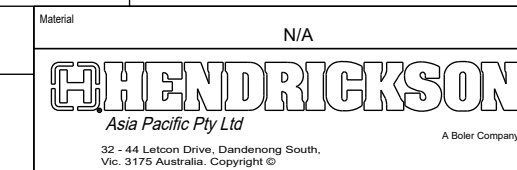
356 (14"RH) HIGH CONTROL



04	ANGLES REINSTATED ON PAGE 3	11496	A.P	16/01/19	S.M.C	21/01/19
03	REVISED AND REDRAWN	11145	S.G.	25/06/18	S.M.C.	24/07/18
02	SEE REV. NOTE 02	10549	G.F.	-	S.C.	20/02/14
01	Release	10183	S.E.	27/06/12	G.F.	03/09/12
Rev	Revision Record	ECN N°	Drawn	Date Drawn	Appr.	Date Appr.

Always check with Hendrickson Asia Pacific Pty Ltd that this drawing is to the latest revision level.

This Print remains the property of Hendrickson Asia Pacific Pty Ltd. All information contained thereon is confidential. It is loaned, subject to return on demand and on express condition that it is not to be copied or used directly or indirectly for any purpose other than the purpose for which it has been loaned to you.



Material	N/A	Finish	N/A	Suppression	N/A	Project	N/A	Mass (kg)	N/A	Sheet N°	Sht 3 of 3																										
Tolerance are:		<table border="1"> <tr> <td>Decimal</td> <td>X: ± 1</td> </tr> <tr> <td></td> <td>X.X: ± 0.5</td> </tr> <tr> <td></td> <td>X.XX: ± 0.05</td> </tr> <tr> <td></td> <td>X.XXX: ± 0.005</td> </tr> <tr> <td>Angular</td> <td>X.X: ± 0.25°</td> </tr> </table>		Decimal	X: ± 1		X.X: ± 0.5		X.XX: ± 0.05		X.XXX: ± 0.005	Angular	X.X: ± 0.25°			<table border="1"> <tr> <td>BOB</td> <td>N/A</td> </tr> <tr> <td>Assembly</td> <td>N/A</td> </tr> <tr> <td>File ref.</td> <td>98873-138</td> </tr> </table>		BOB	N/A	Assembly	N/A	File ref.	98873-138	<table border="1"> <tr> <td>Drawn</td> <td>S.E.</td> <td>Date</td> <td>27/06/12</td> </tr> <tr> <td>Chk'd</td> <td>L.V.</td> <td>Date</td> <td>03/09/12</td> </tr> <tr> <td>Appr.</td> <td>G.F.</td> <td>Date</td> <td>03/09/12</td> </tr> </table>		Drawn	S.E.	Date	27/06/12	Chk'd	L.V.	Date	03/09/12	Appr.	G.F.	Date	03/09/12
Decimal	X: ± 1																																				
	X.X: ± 0.5																																				
	X.XX: ± 0.05																																				
	X.XXX: ± 0.005																																				
Angular	X.X: ± 0.25°																																				
BOB	N/A																																				
Assembly	N/A																																				
File ref.	98873-138																																				
Drawn	S.E.	Date	27/06/12																																		
Chk'd	L.V.	Date	03/09/12																																		
Appr.	G.F.	Date	03/09/12																																		

INSTALN DWG HT230-WELD

Scale: 1:10  
Sheet size: A2  
Drawing: 98873-138